



See the World in a Whole New Way...

Smartvue IP Video Solutions



Video Surveillance

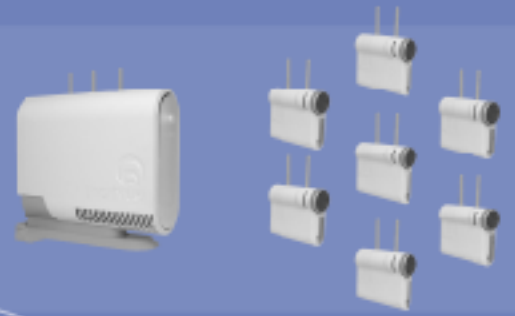
Asset Management

Customer Behavior Tracking

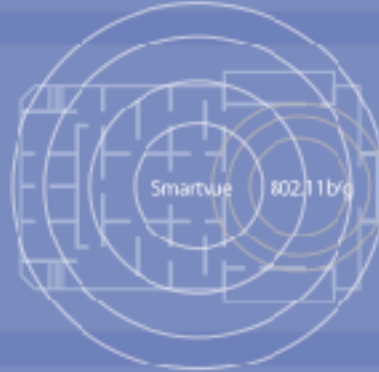
Employee Performance Analysis

Process Management

Self Configuring Plug and Play Solutions



Up to 10X Better Wireless Distance (802.11n ps)



DVD Resolution Wide Dynamic Range H.264 Video



Point and Click People Counting and Reporting



Smartvue® offers award-winning IP video solutions that reduce the cost, complexity, and time required to deploy secure, high quality surveillance and visual business intelligence.



**Plug it in, turn it on, and see for yourself!** Only Smartvue offers 1-Click Surveillance™ in the world's first self-configuring IP video surveillance system. No gateway, IP addresses, or firewalls to worry about. Place up to 10 Smartvue cameras, connect the Digital Video Manager to a network, setup authorized users, then open your web browser or cell phone and check in from anywhere. The easy to use interface and simple alarm settings offer real-time cell phone text messages as well as e-mail alarms with images when motion is detected.

**An IP video system is only as good as its video.** Smartvue controls exposure down to the pixel level to offer "human eye" imaging. Add all new H.264 in-camera compression and progressive scan imaging and Smartvue delivers breath-taking DVD resolution video that is crisp, clear, and perfectly exposed in almost any lighting condition. Smartvue also makes secure, reliable, long range wireless IP surveillance a reality. With 802.11n (pre-standard), it reliably delivers up to 10 times the range of existing 802.11a/b/g wireless.

**Put an iron curtain between valuable video and prying eyes.** Smartvue is protected by a 128 bit encrypted IP video USB key. In addition, Camlock™ technologies and AES/WPA encryption keep cameras locked to prevent unauthorized access. Smartvue is Linux based and offers a closed system for high security and zero network load to keep IT managers satisfied.

**Plug and play analytics for realtime business intelligence.** In camera Intellivue™ technologies offer accurate people counting with easy setup. Optional track lighting mounts and long range wireless cover almost any size facility without wires and make installation a snap. Point and click tracking and reporting is built in for customer traffic and patterns, product display performance, cash register lines and times, employee behavior and patterns and workflow process.

"a dramatic improvement over other IP camera systems"  
-Forbes fyi

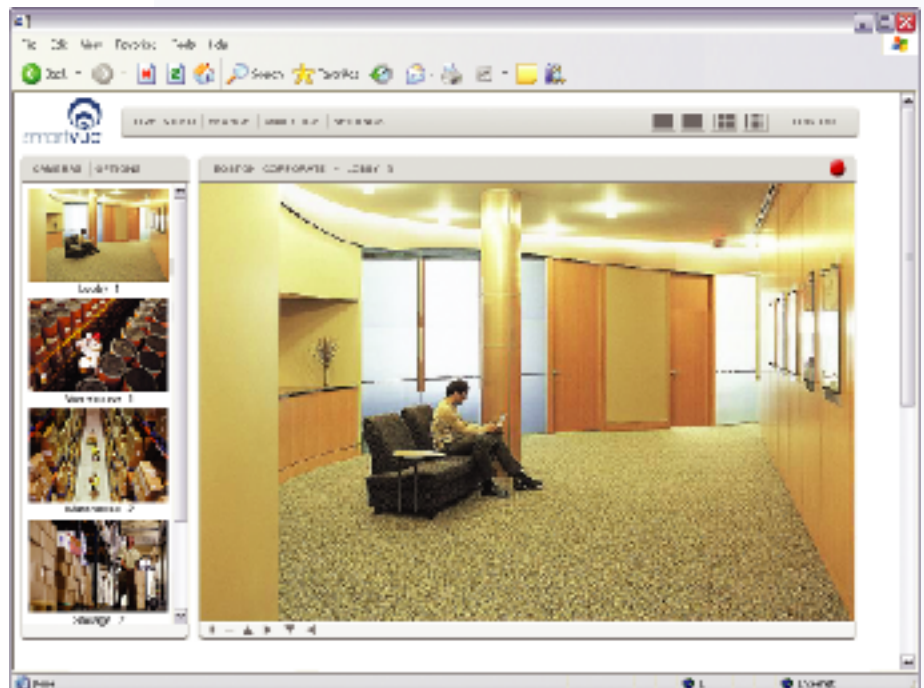
"takes the guesswork out of installing IP video surveillance"  
-Digital Connect

"this self-configuring IP video solution is the first of its kind."  
-Buildings Magazine

"a simple IP video surveillance solution...that makes it easy to monitor as many as 10 cameras"  
-eWeek

"delivers nearly 10 times the range of normal wireless"  
-Digital LifeStyle

Engineering and Design  
Innovations Award Winner  
-CES



Video Quality

- Wide Dynamic Range 95dB typical, 120dB max
- Progressive Scan
- 32 Bit Image Processing
- Global Shuttering with 36GBit per Second Internal Memory
- Square Pixel Technology
- NTSC and PAL support
- Low Light 0.3 Lux
- 17 bit Data Capture
- ATW Auto Tracking White Balance
- Automatic Gain and Backlight Compensation
- Electronic Shutter and Exposure Control
- Tamron 4mm f1.4 or 5-50mm (Outdoor Camera) Super Sharp Lens
- Video Overlay with Camera Identification, Time and Date
- Digital Zoom with Pan and Tilt
- In Camera Motion Detection with Adustable Field of Interest
- Automatic Color/Black and White for Day/Night
- Contrast, Sharpness and Saturation Control
- Zero Smear
- Natural Color Rendering for Difficult Lighting Conditions

Video Features

- H.264 In Camera Compression (Default)
- MJPEG In Camera Compression (Optional)
- 720x480 D1 Recording Resolution
- 720x480 D1 or 320x240 CIF Playback Resolution
- Adjustable H.264 Bit Rate
- Adjustable MJPEG Quality Settings
- Frame Rate up to 30 fps (Adjustable 1-30fps)
- All Digital System from Sensor to Video Stream
- Wired RCA Analog Video Camera Output
- Wired RJ45 Ethernet Camera Output
- Digital Video Manager Capacity 250GB

Wireless and Networking

- Self-Configuring Wireless or Wired Camera System
- MIMO OFDM Wireless Technology (802.11n pre-standard)
- Up to Ten Times the Range of Standard 802.11 a/b/g
- 5GHz Frequency (2.4GHz Optional)
- AES Advanced Encryption Standard Hardware
- WPA Wi-Fi Protected Access Software
- Hidden SSID
- Plug and Play Digital Video Manager
- DHCP Network Connect or Direct to PC (with crossover cable)
- DVMFinder™ Automatically Finds and Sets IP Addresses
- Closed Network for Zero Network Load

Security

- CamLock™ Camera Locking Technology
- Securevue™ 128bit Encrypted USB Key Remote Access and Firewall System
- 2 Level Permission Management with Username and Password Control
- Closed Network Security
- DNoS AP Shutdown Prevention
- New Camera Lock Out/Time Out System

Operation and Requirements

- Simultaneous Live Preview, Video Recording, and Archive Playback
- Weekly Calendar Programming for Recording or Motion Detection
- Video Archive Search by Camera, Date, Time, and Event Type
- Save Video Clip or Still Image to PC or to USB Key with PocketVideo™
- Archive Sort by Video Type with Single and Multi Select Delete
- Multiple Camera Live Scan Setting (Select Cameras and Scan Interval)
- Area Definable In Camera Motion Detection with Sensitivity Control
- Automatic Firmware and Application Updates (optional)
- 1-Click Surveillance™ Technology for Point and Click Operation
- Linux Based Digital Video Manager
- Internet Explorer, Firefox, Safari, Netscape (H.264 Requires P4+ and IE)

Remote Access and Management

- Remotevue™ Instant Remote Access from Windows PC
- Remotevue™ Instant Remote Access from WAP Enabled Cell Phone
- Remotely Configure All System Options Including Users and Security
- VSystem™ Configuration Reduces IP Setup and Firewall Issues
- InsightServer™ Live View Remote Access from PC or Cell Phone (Free)
- E-mail Alerts with D1 720x480 JPEG Images on Motion Detection
- Cell Phone Text Message Alerts on Motion Detection, Power Off, Disk Full
- DHCP or Static IP Mode Operation

Dimensions and Mounting Hardware

- S2/S3 Camera: 42W x 132H x 158D mm (1.6W x 5.2H x 6.2D inches)
- S2/S3 DVM: 97W x 296H x 291D mm (3.8W x 11.63H x 11.49D inches)
- Removable Camera Shelf Stand and Wall/Drop Ceiling Mounting Brackets

Product Line

S2C4 / S2C4W	Smartvue S2 Wireless/Wired Cameras
S2C550 / S2C550W	Smartvue S2 Outdoor Wireless and Wired Cameras (IP67)
S2DVM250	Smartvue S2 Wireless Digital Video Manager (250GB)
S3C4 / S3C4W	Smartvue S3 Wireless and Wired Analytics Cameras
S3C550 / S3C550W	Smartvue S3 Outdoor Wireless/Wired Analytics Cameras
S3DVM250	Smartvue S3 Digital Video Analytics Manager (250GB)
SMVKEY	Smartvue Securevue Encrypted USB Access Key
SMVTVH/J/L	Smartvue Track Lighting Power Mount (select H, J or L)
SMVPCASE	Smartvue Portable Travel Case (holds 1 DVM 2 cameras)

Smartvue Competitive Advantages

	Smartvue	Competition
<b>Installation &amp; Mobility</b>	Plug and play wireless and wired installation Camera and system mobility plus tracklighting option Instant remote access from PC/cell with InsightSever Plug and play analytics with built in reporting 802.11n MIMO pre-standard (5GHz)	IT technician required for installation Typically permanently installed IT setup and IT security settings required for remote access Customized installation and reporting for video analytics 802.11 abg standard 2.4GHz
<b>IT Costs &amp; Maintenance</b>	ZERO network load (complete edge device solution) Only .6-1.5mbps or less 30fps using DVD resolution H.264 in-camera compression (MJPEG optional) Plug and play system reduces IT maintenance	Uses network resources - video runs on existing network 30-60% more storage & bandwidth required using common MJPEG or MPEG video compression IT technician required to test, optimize, and maintain system
<b>Video Quality &amp; Accuracy</b>	H.264 advanced image quality DVD 720x480 video resolution Accurate video with details in difficult lighting Progressive scan with all digital system	MPEG4 20-30% average poorer quality VGA 640x480 or lower CIF 320x240 video resolution Low dynamic range creates shadows and overexposure Interlaced with analog to digital conversion
<b>Wireless &amp; System Security</b>	Closed network (camera to recorder) AES/WPA software and hardware encryption Hidden SSID 128bit USB access key plus username and password	Open through common network traffic WEP software encryption Public SSID Username and password only

# Advanced IP Video Surveillance



SMI 

# Features

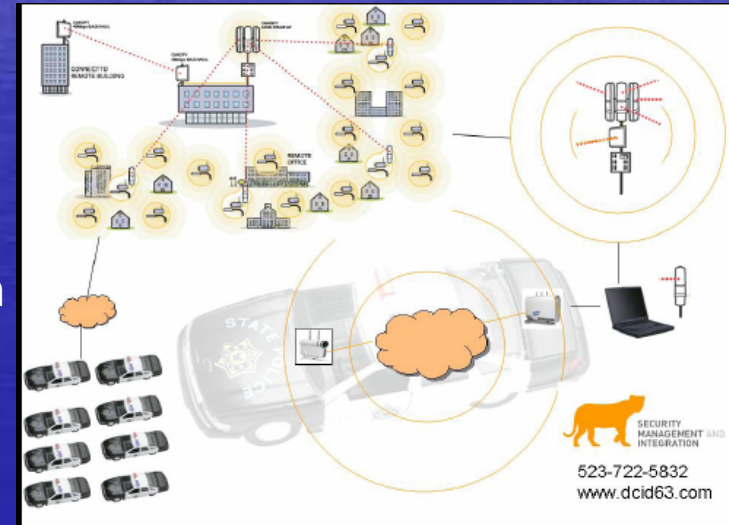
- Real-Time Situational Awareness and Response
- Remote Monitoring and Accessibility
- Faster, Easy Deployment
- Leverage the Existing Networks
- Maximize the Benefits of Smart Cameras and Software
- Optimized ROI



SMI 

# Benefits

- Wireless IP video can be viewed from anywhere in the world
- Real time video monitoring and notification to law enforcement within seconds after offense is committed
- Video is viewable and controllable by police on the way to the crime scene
- **High Quality Video allow for identification by law enforcements of offender after crime is committed**
- **Provide positive identification that help government and private sector organization deter terrorist attacks, crime, and support emergency services.**



**SMI** 

# Benefits

- Expansion of wireless network provides integrated view for traffic monitoring of highways, roads, bridges, dams public safety for emergency services (fire, police, rescue), Oil and gas pipeline network (Iraq), military installation, perimeter, border, school, forestry, water management, and special events.



**SMI** 

# Customers

- WHO will buy IP Surveillance and WHY they will buy.  
Customers who require:
- Long Range Wireless
- Superior Video Quality
- Fast and Simple Installation
- Ease of Use
- Advanced Security
- Zero Network Load
- Unique Product Inventory like Fine Wines, Building Supplies, etc.
- Certified Eyewitness Identification Protocol – Assist in Identifying and Prosecution of the Propitiator
- Ability to recover stolen property after Propitiator is apprehended



**SMI** 

# Key Markets

- Premium Retail
- Museum/Gallery
- Historic Buildings
- Corporate Facilities
- Health/Senior Care Facilities
- Marine/Boat
- Homeland Security First Responder
- Manufacturing Management/Audit
- Premium Residential/Second Home
- Construction Sites



SMI 

# Key Markets



- ## Premium Retail

- Advanced IP Surveillance offers superior quality video in a simple to use system that covers almost any size retail store without wires.
- Move cameras quickly and easily as themes change and use the new track lighting power system to simply click cameras into the track and go.
- Remotely access systems at anytime from almost any PC or cell phone.
- Advanced IP Surveillance smart cameras support video analytics. Count customers entering and leaving the store, count cash register lines (and text message the manager), count traffic down specific aisles or time spent looking at specific products or end caps and access all the data real-time.

**SMI** 

# Key Markets



- **Museum/Gallery**

- Advanced IP Surveillance delivers quality video with wireless mobile cameras that enable quick and easy movement of cameras when exhibits change.
- Real-time customer traffic data and patron time and direction patterns.

**SMI** 

# Key Markets



- **Historic Buildings**
  - Wireless Advanced IP Surveillance offers reliable high quality IP surveillance in places where there are limited options for wiring.
  - Dynamicvue imaging delivers high quality video in even the most difficult environments with mixed sunlight and interior lighting.
  - Our Smart Cameras offers people counting to measure tourist and other traffic.

**SMI** 

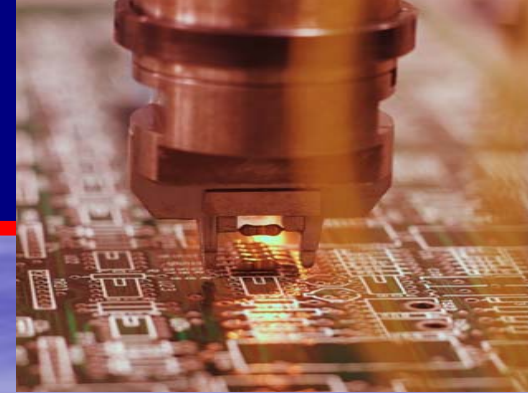
# Key Markets



- **Health/Senior Care Facilities**
  - Our long range wireless and self configuring cameras enable medical care workers to move cameras from room to room as needed and easily monitor patients live.
  - Motion detection inside the cam can provided notification through monitoring center to nurses
  - Doctors can remotely check on patients with high quality remote video access

**SMI** 

# Key Markets



- **Manufacturing Management/Video Audit**

- Smartvue S2 enables manufacturing management to audit new processes and employee performance on the floor. Long range wireless cameras are simple to move from one part of the floor to another. Manager can view live work on the floor from their desks or playback recorded video to audit. Dynamicvue imaging delivers high quality video in even the most difficult shop floor

**SMI** 

# Key Markets



- **Premium Residential/Second Home**

- Advanced IP enables whole house surveillance with no wires.
- Recording of video tracks activities of contractors or hired help.
- Motion detection alerts notify monitoring center and homeowner of in home movement by cell phone text message or e-mail with snapshot.

**SMI** 

# Key Markets



## ● Homeland Security First Responder/Police

- Mobile cameras enable rapid deployment of long range wireless IP video surveillance for instant setup of secure wireless video observation of contained areas.
- Quick and easy remote access from PC or cell phone enable several response options.
- Dynamicvue imaging insures clear and crisp video in almost any lighting condition.

**SMI** 

# Key Markets

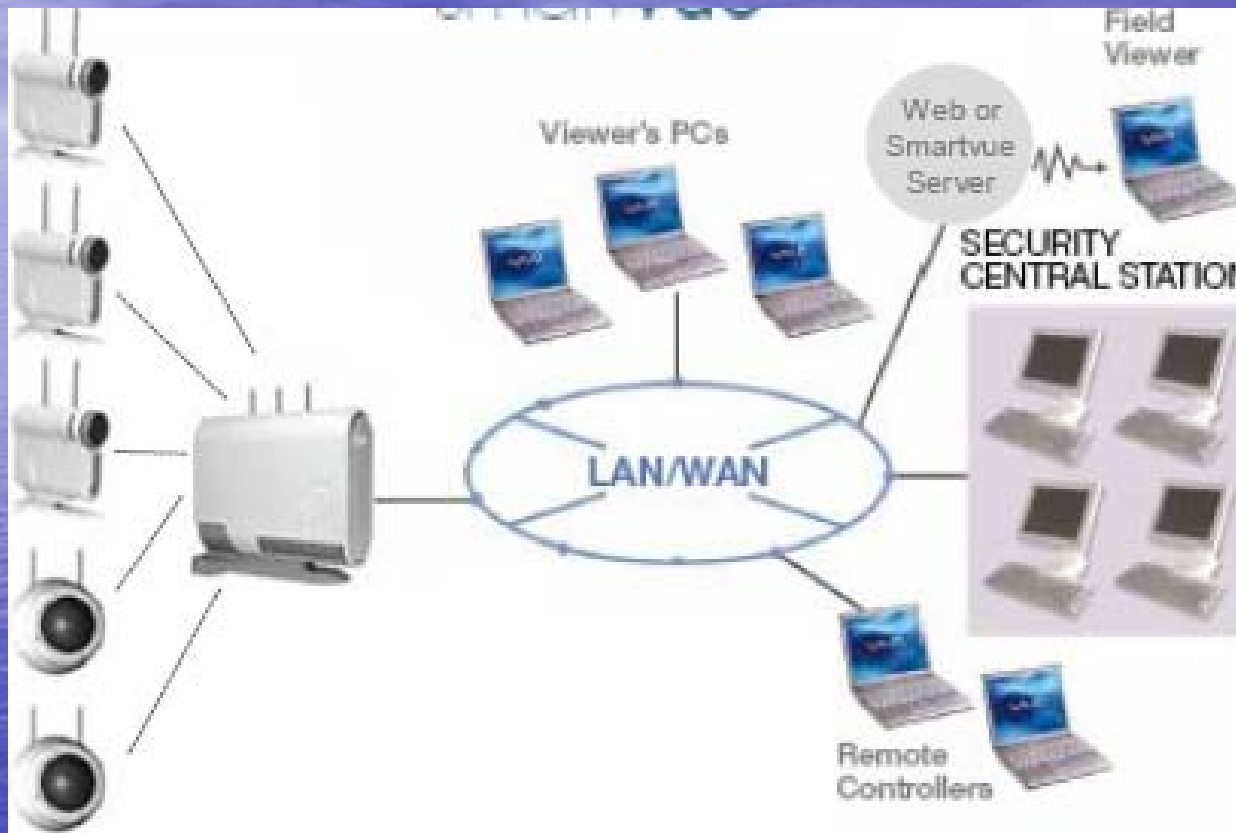


- **Construction**

- Contractor work tracking, construction site shrinkage and liability issues are mitigated with Advanced IP Monitoring solutions.
- Vandal and weather proof outdoor domes offer tough camera options.
- Built in motion detector enables entry and exit traffic monitoring and report of all entry to the site.

**SMI** 

# Architecture



SMI 

# Competitors

	SMI	Protect America	ADT	Brink	Guardian
Monthly Cost	\$39.99	\$39.99	\$39.99	\$39.99	\$39.99
Contract	36 Months	36 Months	36 Months	36 Months	36 Months
Availability	24/7 Alarm Monitoring	24/7 Alarm Monitoring	24/7 Alarm Monitoring	24/7 Alarm Monitoring	24/7 Alarm Monitoring
Alarm Type	Live Video	Analogue Signal	Analogue Signal	Analogue Signal	Analogue Signal
Assessment	Visual	Telephone Call	Telephone Call	Telephone Call	Telephone Call
*Eyewitness ID Protocol®	Yes	No	No	No	No
Digital Video Evidence	Yes	No	No	No	No
Expert Testimony	Yes	No	No	No	No
Certification	All certified to monitor Public Space, and for Collection digital computer forensic evidence.	None	None	None	None

\* Eyewitness ID Protocol – SMI Certified Security Specialists use live and archived digital image to ID suspects.



# Contact Information

Security Management and Integration Company, Inc.  
1423 East 29<sup>th</sup> St, Suite 317  
Tacoma, Washington 98404

[www.dcid63.com](http://www.dcid63.com)

Tel: 253-722-5832



**SMI** 